

Data Logger Features

- 16 x 2 LCD display.
- Wi-Fi / USB Communication
- GUI software for online server.
- 1MB Flash memory (16000 reading).
- Data download in excel format.
- Single relay for controlling the application.
- Optional Battery Back up to 6-8 hour (Rechargeable)

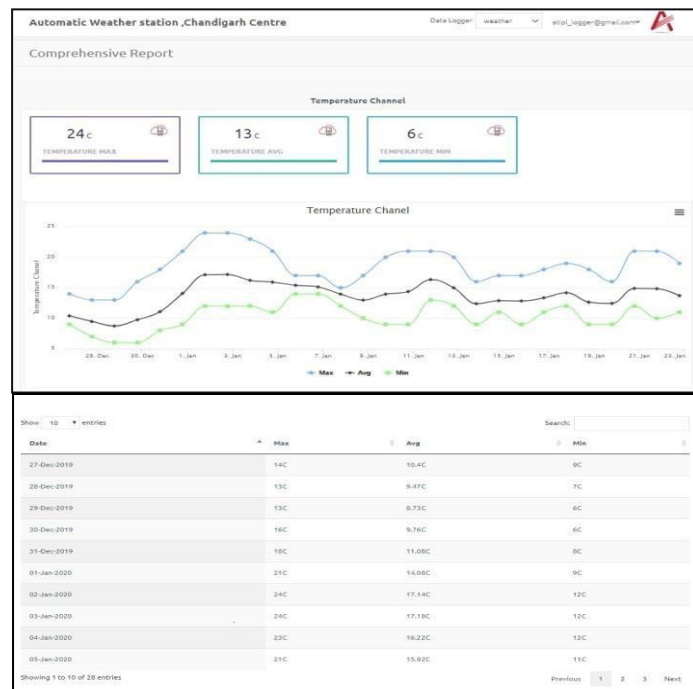


Information Display Features (Optional)

- Indoor Led Board
- Outdoor Led Board

Software (Optional)

- Window DAQ S/W
- Cloud/Mobile App S/W
- MODBUS S/W



Sensor Specification

- Range : -30 to 70 Degrees
- Accuracy : 0.3 Degree
- Resolution : 8 bit
- Waterproof Sensor



AdvanceTech India Pvt.Ltd.
www.atechindia.com

